



MONTHLY MEMBERSHIP PROGRESS REPORT

District 201W2

Results as of: 06/30/2019

GMT: ANN ELDRIDGE

LOCATION AUSTRALIA

GMT CA

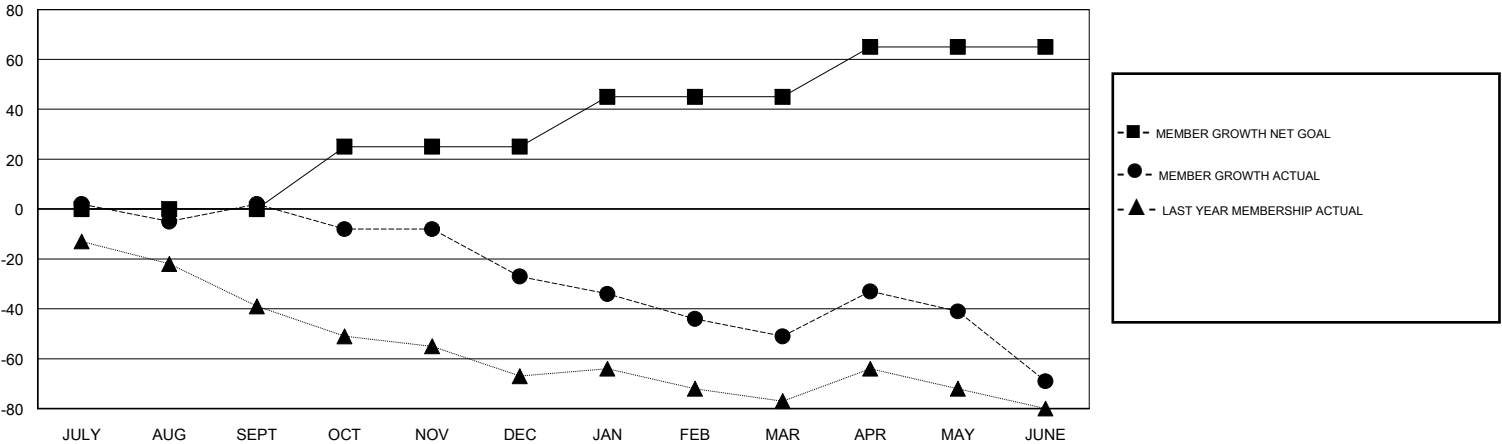
Clubs			
RESULTS FOR 2018-2019			
QUARTER	NEW CLUB GOAL	NEW CLUBS	DROPPED CLUBS
JULY/AUG/SEPT	0	0	0
OCT/NOV/DEC	1	0	0
JAN/FEB/MAR	0	0	0
APR/MAY/JUNE	0	0	1

Members			
RESULTS FOR 2018-2019			
QUARTER	MEMBER GROWTH NET GOAL	MEMBER GROWTH ACTUAL	DROPPED MEMBERS ACTUAL (including transfers)
JULY/AUG/SEPT	0	34	28
OCT/NOV/DEC	25	32	52
JAN/FEB/MAR	20	34	52
APR/MAY/JUNE	20	53	63

GOALS AND ACTUAL NEW CLUBS CUMULATIVE



GOALS AND ACTUAL MEMBERS CUMULATIVE



DROPPED CLUBS: 1	46 CLUBS OF 62 ADDED 1 OR MORE NEW MEMBERS	<u>GENDER DISTRIBUTION</u> MALE 902 (67.06%) FEMALE 443 (32.94%) Women Percentage Fiscal Year Goal: 38%
<u>DROPPED MEMBERS</u> DECEASED 12 CLUB CANCELLED 9 OTHER 174 TOTAL 195	CLICK HERE FOR CUMULATIVE MEMBERSHIP DATA	TOTAL FAMILY UNIT MEMBERS 237 FAMILY MEMBERS PAYING HALF DUES 119